

Things to See

A Enjoy the view over Laverstock. In the valley are the Community Farm, River Bourne and water meadows. The field directly in front of you is managed by the Farm. You are surrounded by chalk grassland rich in wild flowers and insect life. Blackthorn is the most common shrub. Creamy white flowers in early spring & sloe berries in autumn.

B A good view of Salisbury and its Cathedral. Its spire is the tallest in Britain. The hedge behind you was a 'park pale' & marks the boundary of the Clarendon Estate.



C Highest point on the trail with amazing views.

More than 120m (400ft) above sea level. North is the military airfield at Boscombe Down and beyond the army base at Larkhill. North-West is the World War 1 grass airfield at Old Sarum. Further west is Old Sarum Castle.

D An Interpretation Board for the Wiltshire

Wildlife Trust Cockey Down Nature Reserve. A Site of Special Scientific Interest (SSSI). Rare orchids and a scarce example of unimproved chalk grassland.

E Rabbits, blackberries and Orchids can be found along the base of the down. A sign reveals the presence of an underground oil pipeline from the refinery near Southampton to Avonmouth near Bristol. It carries petrol, diesel, jet fuel and heating oil beneath your feet.



Dogs Dogs are permitted but must be kept on a lead in the vicinity of livestock and poultry. Pick up and remove poo, especially near farm buildings, houses, gates and footpaths.

River Bourne Community Farm

Cow Lane, Laverstock, Salisbury, SP1 2SR
01722 330667

www.riverbournecommunityfarm.org.uk
Contact us to become a friend or volunteer
and for more information.

Meadow & Down Trails Project

The TRAILS PROJECT was a community initiative delivered by River Bourne Community Farm Community Interest Company with funding from the Heritage Lottery Fund, and was supported by Wiltshire Council, the Salisbury International Arts Festival & the Laverstock and Ford Parish Council. The project set up easy-to-access Trails across Laverstock and Ford Parish to enjoy Meadow & Down wildlife and the traditional farming practices that sustain it.

The Trails feature new wildlife habitats, benches and way-markers. The Old Sarum Trail was not finalised, due to problems with the housing estate developer. The Hampton Park Trail will be incorporated into the Castle Hill Country Park, but can still be followed around Bishopdown Farm Estate. The Trails have been developed and maintained by volunteers and community groups. Benches have been installed around the trails and you can look out for bat boxes, bird nesting boxes and insect dwellings. Wild flowers and native trees have been planted to enhance these areas for all to enjoy.

For further information please visit the trails section of our website. www.riverbournecommunityfarm.org.uk

Public Transport

Red bus 6 from Endless St. - get off in Hill Road, walk uphill, turn left into Boundary Road and follow this until you reach the open space, with marker 9 to your left and marker 1 in front below the Down.

Why not enjoy a drink/meal at the Duck and park there? At weekends only you may park at the factory below marker 7.

Laverstock & Ford Parish Council have kindly funded the printing of this leaflet.



River Bourne
Community Farm
Meadows & Down Trails

Laverstock Down
Trail



This circular trail explores the length of Laverstock & Cockey Downs. You will see rare chalk grassland with its unique plants and wildlife, and both modern & traditional farming methods. In addition you can enjoy views over Salisbury & the Wiltshire landscape.

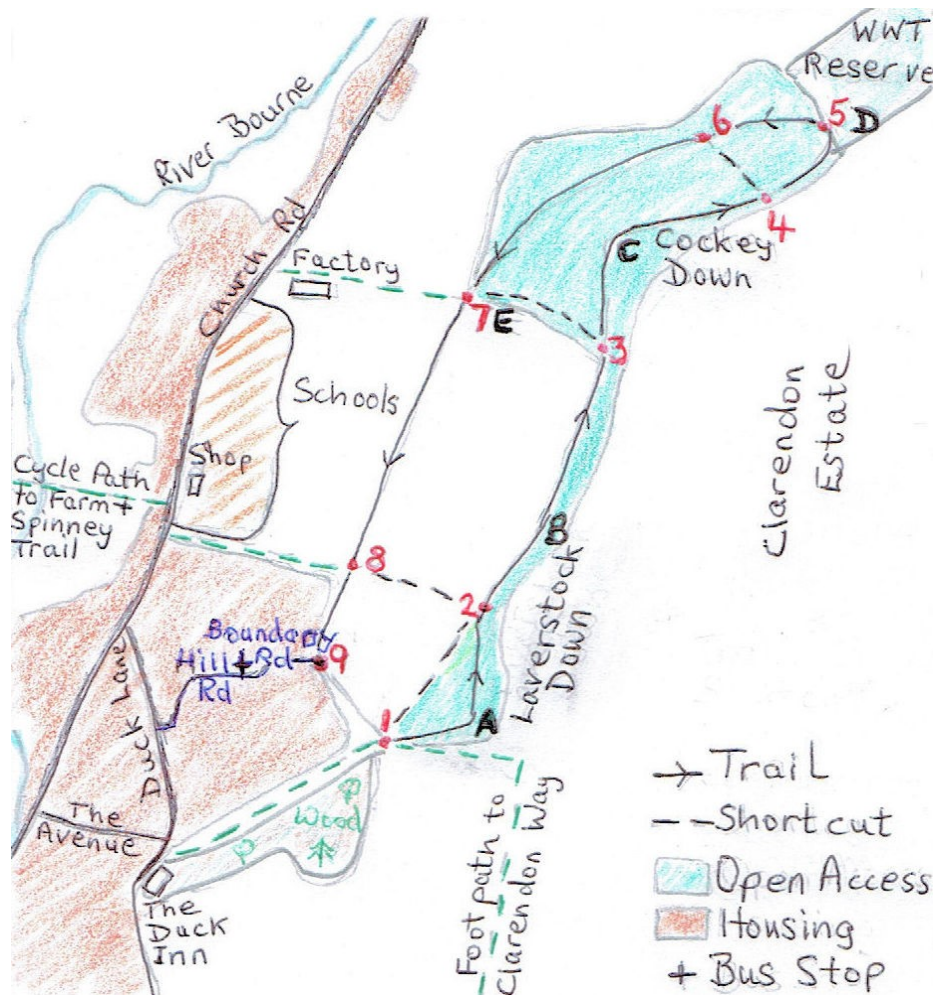
The walk. The full trail is 2½ miles (4km) and will take about 1¼ hours, but at several points you can take a shortcut back to your starting point. Parts of the trail are hilly and climb 200ft (70m) to the top of the down but it is possible to keep to lower ground. Walking is on rough paths and grassland. Some parts may be muddy in wet weather. Cycling is not permitted. See inside this leaflet for a map and directions.

Things to see. Highlights are listed inside. More facts can be found in the Trail Information Leaflet, available to download at www.riverbournecommunityfarm.org.uk or scan this Qcode and another that can be found on the interpretation board at marker 1.



Supported by
The National Lottery[®]
through the Heritage Lottery Fund





Laverstock Down Trail

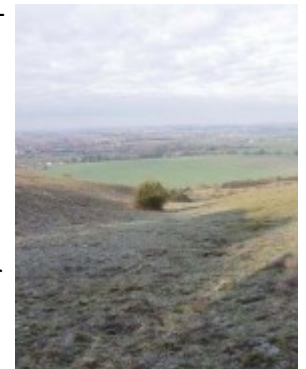
You can start the trail at points **1**, **7**, **8** or **9**. Some of the markers on this trail are missing, but it is easy to follow from the directions and the accompanying map. **A - E** are points of interest. See back of leaflet.

1. Pass through the kissing gate on to the down. To stay on level ground follow the path to the left alongside the hedgerow to marker **2**. If you do not mind a short climb keep right of the bramble bush and then head diagonally up the down to the way marker at point **A**. Admire the view before continuing downhill to **2**.



2. For the shortest route pass through the kissing gate and follow the track to **8**. To continue the trail turn right up the hill to point **B** where you will find a great view of Salisbury. Continue down the hill and past the cattle trough to **3**.

3. Here you have another choice. You can shorten the trail by turning left and following the field boundary to the kissing gate at **7**. To continue the trail you must climb the hill in front of you. The easier path heads to the left of the beeches, or you can climb the steep incline directly in front of you. At the top pause in front of the beech trees at point **C** and admire the view. You are now entering a Site of Special Scientific Interest (SSSI). (See information leaflet)



4. At this point a small combe runs downhill on your left. You can follow this combe down to point **6** to shorten the trail, or continue along the track, with the fence on your right, until you reach a field gate. This marks the boundary of the Wiltshire Wildlife Trust Cockey Down Nature Reserve. Do not enter but turn left and follow the fence down to a wooden kissing gate at point **5**.

5. Just through the kissing gate is an interpretation board. You can explore the Nature Reserve from here but please keep to the paths and have dogs on short lead. To continue the trail return through the kissing gate and follow the path diagonally down the slope to point **6** at the bottom of the small combe.

6. From here you have the choice of the path along the base of the slope or another half way up. Both will lead around the down to another metal kissing gate at point **7**.

7. If you started here you can turn right and return to the factory car park. To proceed follow the path alongside the field with the school playing field on your right, until you reach the track at point **8**.

8. Again if you started here you can turn right and return to the main road. Pass through the kissing gate and follow the path with the houses on your right to return to points **9** and **1**. The field on your left has received funding from Natural England to develop it for wildlife conservation.

We hope you enjoyed your walk.